

EXPERIMENTAL MOVIE BY

A L I C J A
G R O M A D Z K A

Everything in life and nature is formed by two
opposite but complementary forces. These forces
are constantly interacting, aiming for a dynamic
b a l a n c e
While opposite, they are mutually enhancing, each
bringing significance to the other.

01 Brand Research

Who is Armani woman?

The Armani woman embodies a lifestyle of refined elegance, blending sophistication with a distinct and independent spirit. She's **self-assured** and grounded, with a deep-rooted sense of identity that transcends fleeting trends. Her style is timeless, choosing quality and aesthetic over passing fashions, and she finds beauty in simplicity and understated luxury. She is cultured, with an appreciation for art, design, and the finer things, and often travels internationally. Leadership position and well-educated, commanding respect in her field and possessing a confident, individualistic mindset. She values not only her career success but also personal growth, adventure, and elegance that reflects her **empowered nature**. The Armani woman is strong and feminine, with a confident, adventurous spirit that aligns with her cosmopolitan lifestyle. Her choices are defined by taste and a passion for quality, making her a modern icon of understated, timeless elegance.





02

Potographer Inspiration Horst P. Horst

Dramatic Lighting

Lighting is one of Horst's signature techniques. He often used dramatic chiaroscuro (light-dark contrast) to create depth, emphasizing his subjects' features and textures. This effect gave his images a sculptural quality, almost as if the subjects were carved in light and shadow. He frequently employed soft, directional lighting to highlight the contours of the human body, as well as fabrics and textures in fashion photography.

Classical and Sculptural Aesthetic

Horst's work shows a clear influence from classical Greek and Roman art. He depicted his subjects with a sculptural quality, reminiscent of marble statues. His models often appear serene and still, posed in ways that echo classical sculpture. He appreciated the human form as an art form in itself and emphasized it with graceful poses and structured silhouettes.

Emphasis on Pose and Gesture

Horst guided his models to strike poses that enhanced their silhouettes and displayed clothing to its best effect. The resulting images often feel cinematic, with a heightened sense of drama and movement. His portraits convey a sense of calm strength and poise, capturing the essence of his subjects, from celebrities to aristocrats.



03 Director Inspiration Lynne Ramsey

Visual Storytelling and Symbolism

Ramsay often lets images speak louder than words. She uses striking, sometimes haunting visuals to convey themes, emotions, and character psychology. Her work is rich in symbolism, with recurring motifs and carefully chosen details that invite deeper interpretation.

Fragmented Narratives

The framing becomes a key element of storytelling. The important details are often partially obscured—eyes slightly cut off, faces turned away, or gestures only half-glimpsed—creating a sense of mystery. It is as if the film is inviting you to lean in closer, to observe more carefully, and to draw your own conclusions about what the characters might be feeling or thinking.

Focus on the Mundane and Unspoken

Ramsay has a knack for finding beauty and significance in the mundane. She lingers on small, seemingly ordinary details—a hand brushing against fabric, the way sunlight falls on a wall—to evoke atmosphere and mood. Similarly, her characters' unspoken thoughts and feelings often take center stage, communicated through subtle gestures or glances rather than dialogue.

04 Storytelling of the video

The story of the video is an exploration of how life and nature are shaped by two **opposite yet deeply complementary forces**. These forces, though interacting to create a dynamic **balance**. They are not adversaries but partners, mutually enhancing one another and revealing their full significance only through their connection.

Against this universal backdrop, the protagonists embody this principle as they navigate their physical differences. Their journey is not about erasing their contrasts but embracing them, finding a way to bridge the gap and **harmonize with one another**. Each brings something unique to the relationship, and through their interaction, they learn to appreciate the richness that these differences bring.

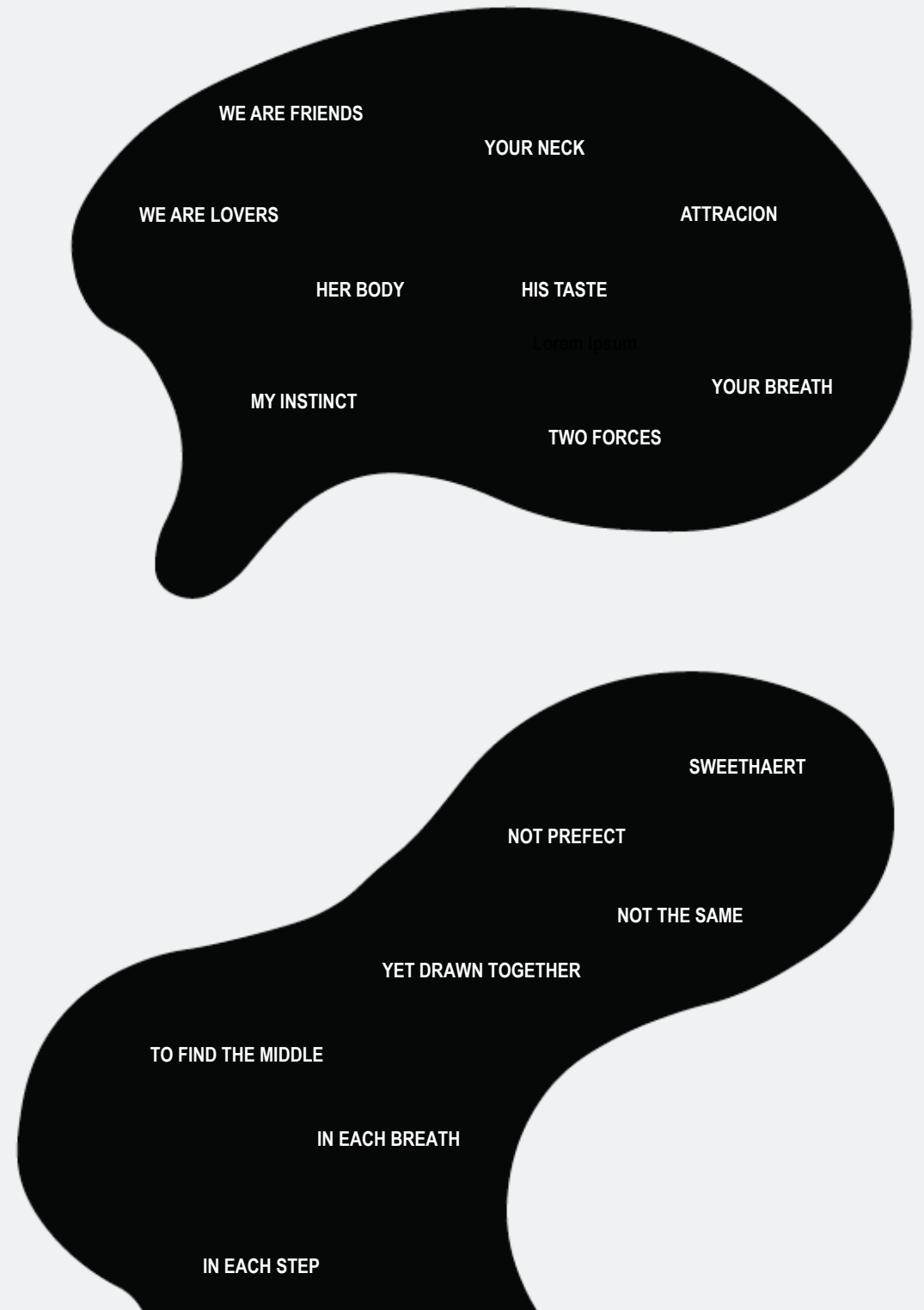
The story shows how unity can emerge from diversity and how opposites, when acknowledged and celebrated, can create something far greater than the sum of their parts. It is an important reminder that harmony is not found in sameness but in the delicate balance between contrasting elements—a balance that reflects the very essence of life itself.



06 Theme choice Visual Poem

For the theme, I envision a visual poem. This concept will enhance the intimate shots of the body, elevating them beyond mere visuals into a **deeply emotional narrative**. The addition of a first sight's random words—appearing like whispers on the edge of perception—will enrich the storytelling. These words, carry the essence of the relationship between the two characters.

Each word will act like a fragment of thought, emotion, or memory, weaving through the imagery to reveal their shared journey. Whether tender, raw, or conflicted, these textual elements will echo the unsaid, the fleeting impressions that pass between people in moments of connection. Through this approach, the visuals and text will merge into a poetic exploration of their story.



07 Cinematography references Damien Krisl

Damien Krisl is a Swiss-born director and photographer, now based in Paris. His work seamlessly blends luxury, beauty, and fine art, often exploring dream-like narratives and avant-garde imagery. He started his career influenced by the high aesthetic standards of fashion photography and transitioned to filmmaking to bring those visual elements into motion.

Krisl's films often employ innovative techniques, focusing on sensory experiences and visual storytelling. Notable projects include *Amphitrite*, inspired by Greek mythology, which gained recognition at multiple film festivals. His work is marked by a fascination with contrasts, such as the interplay of strength and delicacy, often incorporating elements like fire and water to evoke emotion and drama

:



08 Casting Man & Woman

Woman

A graceful individual with delicate, ethereal features. She has light, almost porcelain-like skin and long, soft blonde hair that falls in gentle waves, evoking a sense of elegance and tranquility. Her demeanor is calm and poised, with expressive eyes that reflect depth and sensitivity. Physically, she has a slender build with a refined, almost angelic presence.

Man

A strong, commanding figure with a rugged charm. He has dark, tightly coiled curly hair that frames his face with an intense, natural energy. His features are bold and masculine, with a chiselled jawline and a powerful, athletic physique that conveys strength and vitality. His presence is grounded and confident, a natural complement to the woman's gentle and airy aura.

Together, their physical contrast creates a visually captivating dynamic, emphasizing both their individuality and the harmony they find in each other. Perfect for a narrative that balances strength and delicacy, contrast and unity. For the shoot, envision a striking contrast between the two characters, enhancing the theme of opposites harmonizing.

Here's the casting description:





we are friends



we are lovers



your neck



her body



my instinct



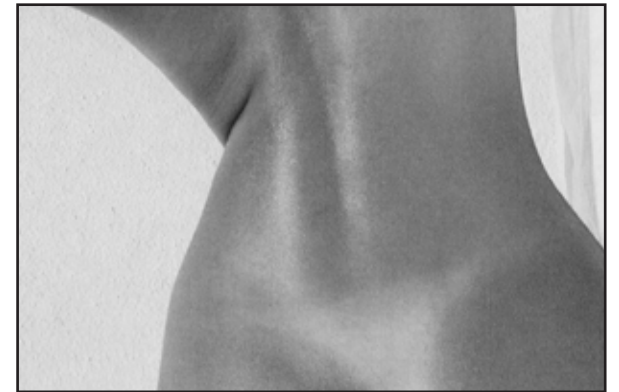
his taste



two forces



attracion



your breth



sweetheart



not perfect



not the same



yet drawn together



to find the middle



in each breath



in each step

09 Conclusions

The project masterfully weaves together the universal themes of **balance, contrast, and unity** through a poetic narrative and striking visuals. Drawing inspiration from nature's duality, the story celebrates the interplay of opposites—strength and delicacy, masculinity and femininity, individuality and connection—demonstrating how harmony arises from diversity.

The characters' physical contrasts highlight their unique qualities while showcasing the profound beauty of their interconnection. Through a dynamic interplay of light, texture, and evocative words, the project captures the essence of life's delicate balance, leaving a lasting impression of timeless elegance and emotional depth.

